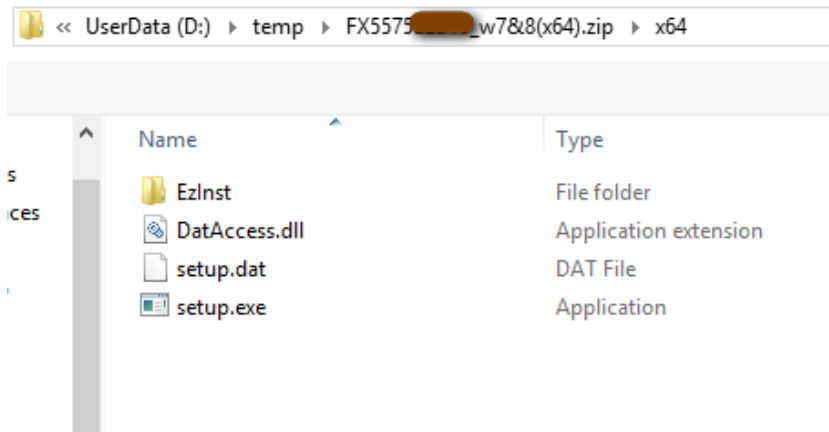


# Driver Installation - Fuji Xerox AP-V C5575 T2 MFP (ELB 10/F or CKB 515)

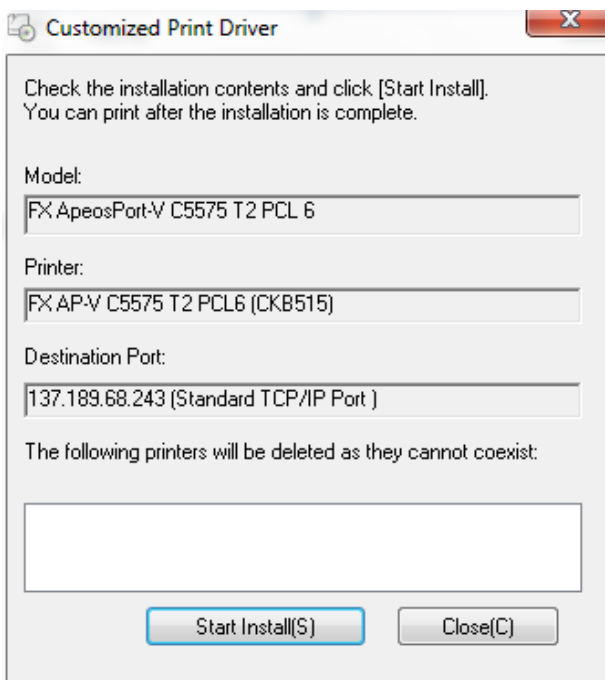
## I. Windows (8.x, 10)

1. Choose and download the appropriate customized driver (64/32 bit) from (Printing Service section): <https://www.econ.cuhk.edu.hk/econ/en-gb/facilities/computer-facilities>
2. Double-click the zip file to expand it. Then double-click 'setup.exe' to begin driver installation.

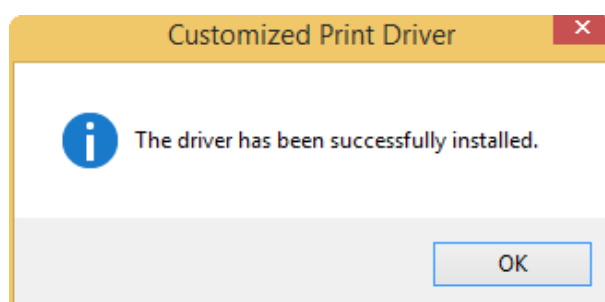


*(answer 'Yes' when asked about making changes to the computer)*

3. A window titled 'Customized Print Driver' appears, click 'Start Install' button at the bottom.



4. Wait a moment then a window will pop up telling you that the driver installation is successful. Click 'OK' to close the windows.



5. To confirm the printer driver has been installed,

Win10: type 'Control Panel' in the Windows Search Bar > 'Device and Printers'

Win8.x: Open the Charms bar, click Settings > PC info > Control Panel > View Device and Printers (under 'Hardware and Sound' catalog).

The name of the printer is 'FX AP-V C5575 T2 PCL6 @ELB10F' or 'FX AP-V C5575 T2 PCL6 @CKB515'.

*\*\* The customized printer driver for Windows is set to print in B/W and duplex by default. You may change the default parameters yourself if needed.*

## II. Mac OS-X (v10.10-11.x)

1. Download the specific driver (for model AP-V C5575) from the following webpage:
2. [https://support-fb.fujifilm.com/processDriverForm.do?ctry\\_code=HK&lang\\_code=en&d\\_lang=en&corp\\_pid=AP5C5575&rts=null&model=ApeosPort-V+C5575&type\\_id=2&oslist=Mac+OS+11.0&lang\\_list=en#prettyPhoto](https://support-fb.fujifilm.com/processDriverForm.do?ctry_code=HK&lang_code=en&d_lang=en&corp_pid=AP5C5575&rts=null&model=ApeosPort-V+C5575&type_id=2&oslist=Mac+OS+11.0&lang_list=en#prettyPhoto)

(select Mac OS 11.0, choose the 1<sup>st</sup> for Intel-based CPU, the 2<sup>nd</sup> for Apple Silicon CPU )

### ApeosPort-V C5575 Drivers & Downloads


Not your product? Search again

Drivers    Self Help    Documentation    Utilities    Learning

Operating System: Mac OS 11.0    Language: English    [Help with Driver Selection](#) +

---

**Recommended** 


Mac Print Driver >

Version: 1.0 [Compatibility](#) > [File Information](#) >

**Notes**

Type: PDF Print Driver

---

**Recommended** 

Mac Print Driver >

Version: 1.72.002 [Compatibility](#) > [File Information](#) >

**Notes**

Driver Type: PDF

Added support for Apple Silicon.

2. ITSC has published the following driver installation guide for a similar printer model (<https://www.itsc.cuhk.edu.hk/images/content/it-facilities/learning-commons/install-wmylc-mac.pdf>) but you need to make the following changes in our case (step x is the corresponding sequence in ITSC's PDF):

Step 1: the driver download webpage and driver name is different from ITSC (see step 1 above).

Step 2: filename of downloaded driver should be something like 'ffmacprnstd\*\*\*\*.dmg' (where \* is a digit)

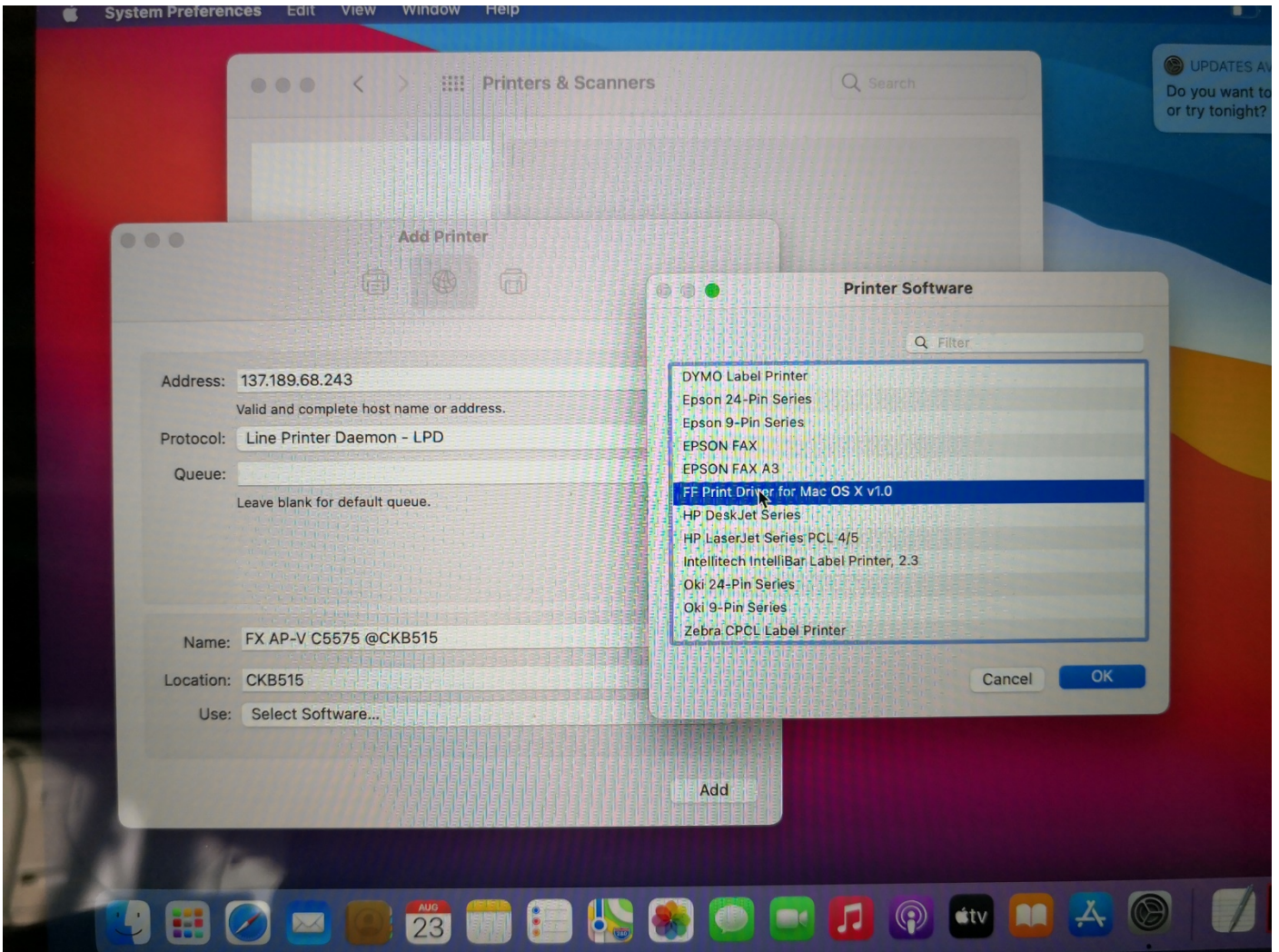
Step 11: (a) set the IP address to '137.189.68.242' for the printer at ELB10F  
or '137.189.68.243' for the printer at CKB515

(b) set Protocol to 'Line Printer Daemon – LPD'

(c) Name of the MFP machine can be any meaningful string (e.g. 'FX AP-V C5575 @ELB10F' or 'FX AP-V C5575 @CKB515').

Step 12: Choose 'FF Print Driver for Mac OS X v1.0'

Step 14: this step may not appear and could be skipped



(4-2-2016, by kwyau, updated 19/5/2016, 30/4/2018, 12/9/2018, 5/3/2019, 24/8/2021)