

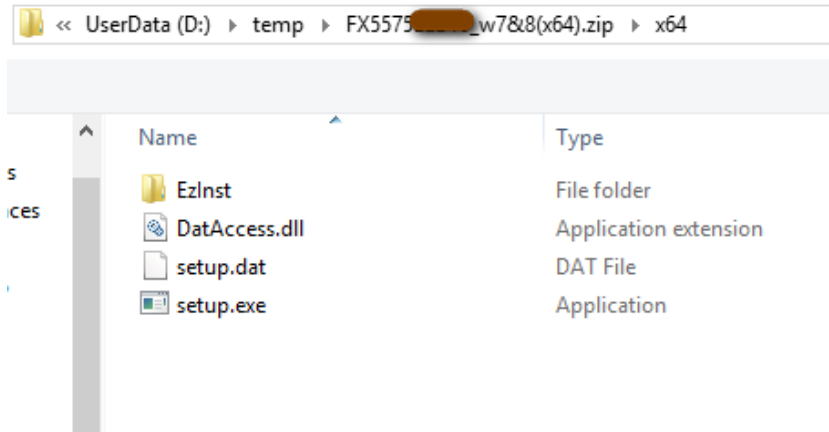
Driver Installation - Fuji Xerox AP-V C5575 T2 MFP (Rm. 515 CKB)

I. Windows (7, 8.x, 10)

1. Download the appropriate driver (32bit or 64bit) from:

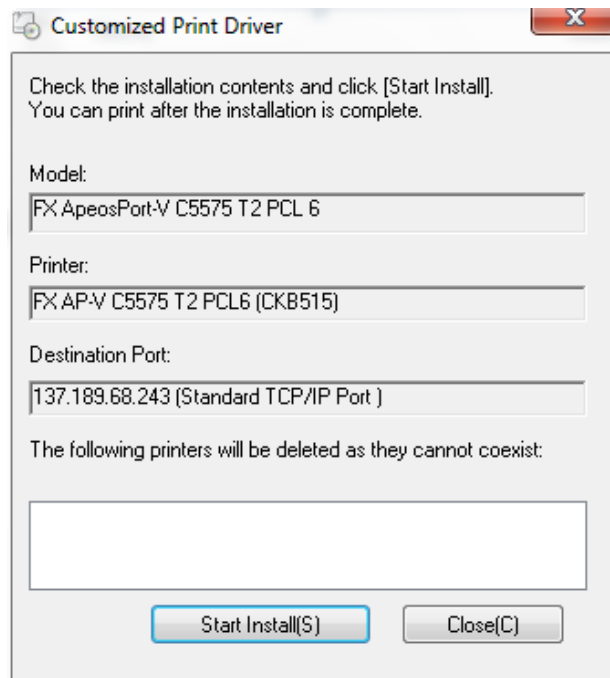
<http://www.econ.cuhk.edu.hk/dept/com.php>

2. Double-click the zip file to expand it. Then double-click 'setup.exe' to begin driver installation.

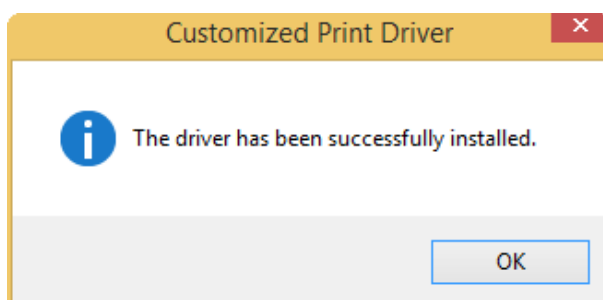


(answer 'Yes' when asked about making changes to the computer)

3. A window titled 'Customized Print Driver' appears, click 'Start Install' button at the bottom.



4. Wait a moment then a window will pop up telling you that the driver installation is successful. Click 'OK' to close the windows.



5. To confirm the printer driver has been installed,

Win7: Click Start > 'Device and Printers'

Win8.x: Open the Charms bar, click Settings > PC info > Control Panel > View Device and Printers (under 'Hardware and Sound' catalog).

Win10: Right-click 'Start' > 'Control Panel' > 'Device and Printers'

The name of the printer is 'FX ApeosPort-V C5575 T2 PCL6 @CKB515'.

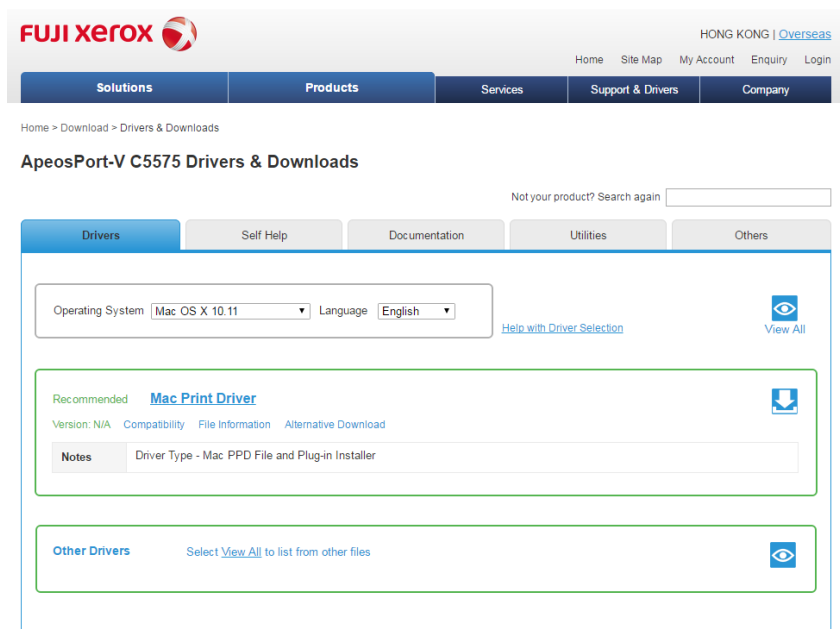
**** The customized printer driver for Windows is set to print in B/W and duplex by default. You may change the default parameters yourself if needed.**

II. Mac OS-X (v10.5-10.11)

1. Download the specific driver (for model AP-V C5575) from the following webpage:

http://onlinesupport.fujixerox.com/setupDriverForm.do?ctry_code=HK&lang_code=en&d_lang=en&pid=AP5C5575

(select Mac OS X 10.11 in the dropdown box for Operating System.)



The screenshot shows the Fujitsu Xerox website's driver download page. At the top, there is a navigation bar with 'Solutions', 'Products', 'Services', 'Support & Drivers', and 'Company'. Below this, the breadcrumb trail reads 'Home > Download > Drivers & Downloads'. The main heading is 'ApeosPort-V C5575 Drivers & Downloads'. There is a search bar with the text 'Not your product? Search again'. Below the search bar are tabs for 'Drivers', 'Self Help', 'Documentation', 'Utilities', and 'Others'. The 'Drivers' tab is selected. Underneath, there are dropdown menus for 'Operating System' (set to 'Mac OS X 10.11') and 'Language' (set to 'English'). A 'View All' button is visible. The main content area shows a 'Recommended' section for the 'Mac Print Driver' with a download icon. Below this, there are links for 'Version: N/A', 'Compatibility', 'File Information', and 'Alternative Download'. A 'Notes' section indicates the driver type is 'Mac PPD File and Plug-in Installer'. At the bottom, there is an 'Other Drivers' section with a 'View All' button.

2. ITSC has published the following driver installation guide for a similar model

(<http://www.cuhk.edu.hk/itsc/network/ssp/pichiu/install/WMYLCmac.pdf>) but you need to make the following changes in our case (step x is the corresponding sequence in ITSC's PDF):

Step 1: the driver download webpage and driver name is different from ITSC (see step 1 above).

Step 2: filename of downloaded driver should be 'fxmacprnps1509am105iml.dmg'.

Step 11: set the IP address to '137.189.68.243'. You can set an arbitrary name for the MFP machine (e.g. FX AP-V C5575 @CKB515).

Step 12: Key in 'FX' and scroll to find the appropriate driver. It should be something like 'FX ApeosPort-V C5575 T2 v3018.103 PS'

(5-2-2016 by kwyau, updated on 19-5-2016)